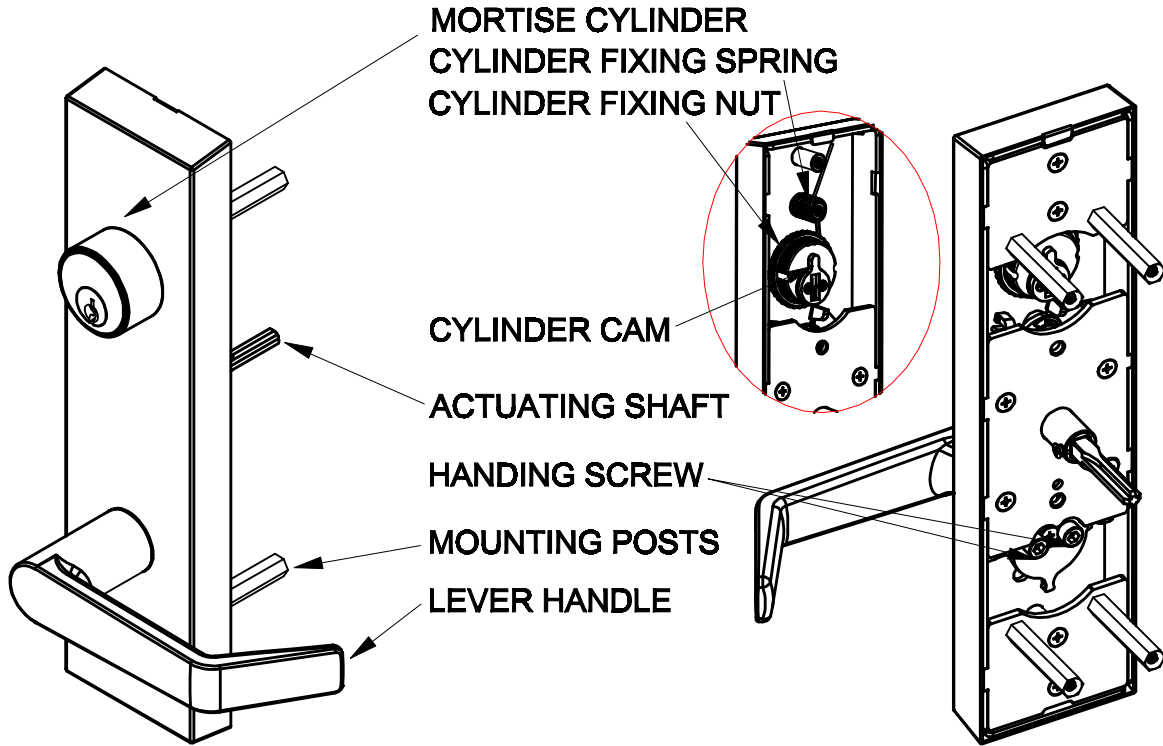


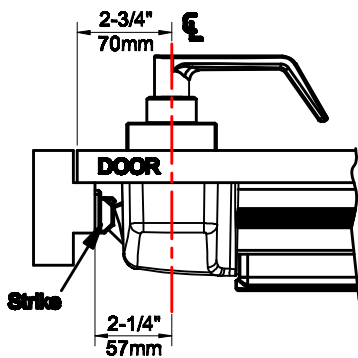
INSTALLATION INSTRUCTIONS FOR ESCUTCHEON LEVER / KNOB FOR EXIT DEVICE

1. Parts name

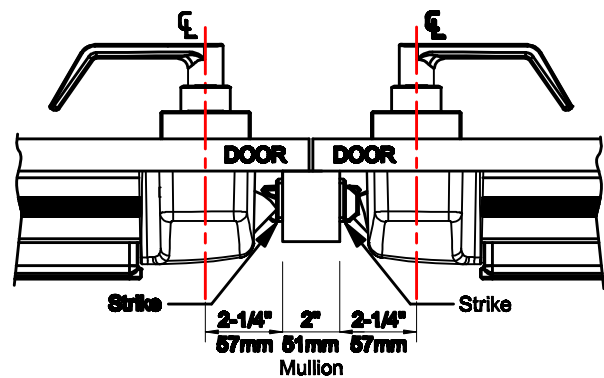


APPLICATIONS

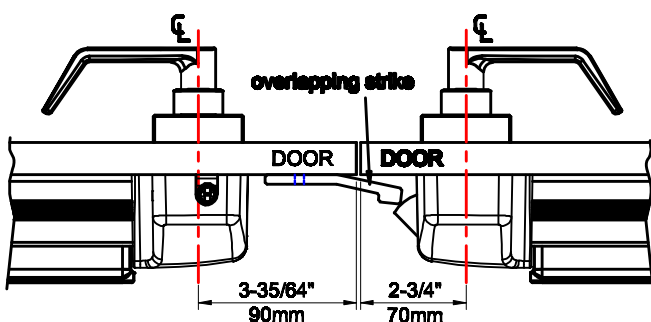
Single Door With Rim Device



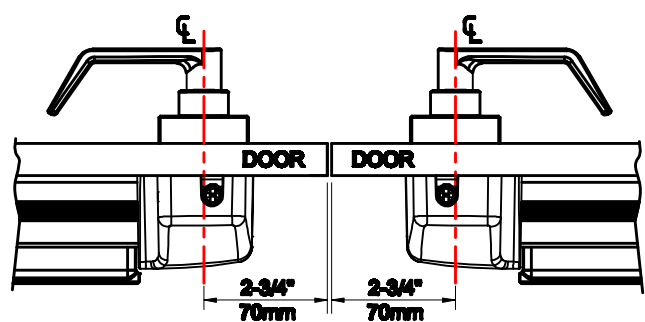
Double Door With Mullion



Double Door With Rim Device and Surface Vertical Rod Device



Double Door With Surface Vertical Rod Device



SET UP HAND OF LEVER HANDLE

1. Trim shipped with lever in the natural (non-handed) position.
 2. Turn lever handle to right or left direction to meet door handing.(Fig.1)
 3. Tighten handing screws (2), (inside hexagon).(Fig.2)
- ※ Please proceed with ESCUTCHEON TRIM / EXIT DEVICE INSTRUCTIONS.

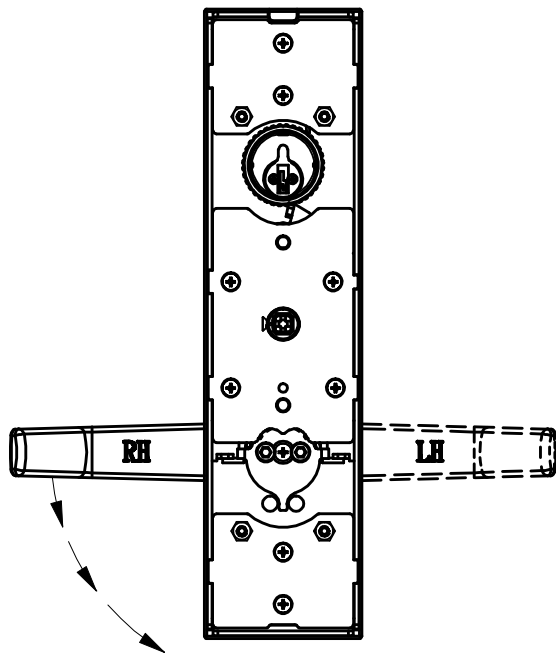


Fig. 1

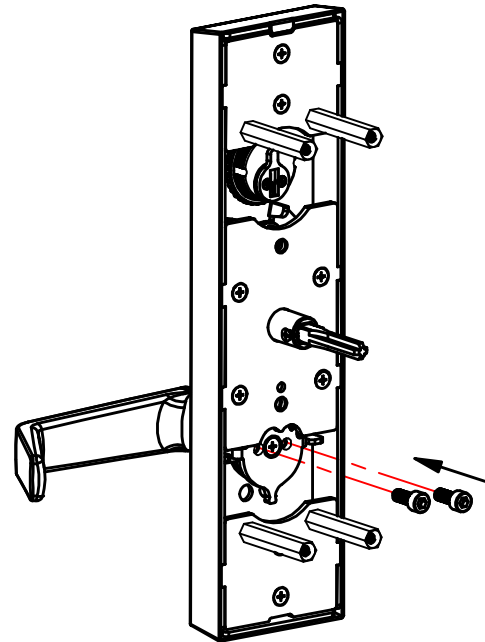


Fig. 2

INSTALL MORTISE CYLINDER

1. Attach the collar and mortise cylinder to the ESC case with mortise nut.(Fig.3)
2. Position cylinder cam & install cylinder fixing spring as shown.(Fig.4)
3. Install back cover and mounting posts with provided screws.(Fig.5)

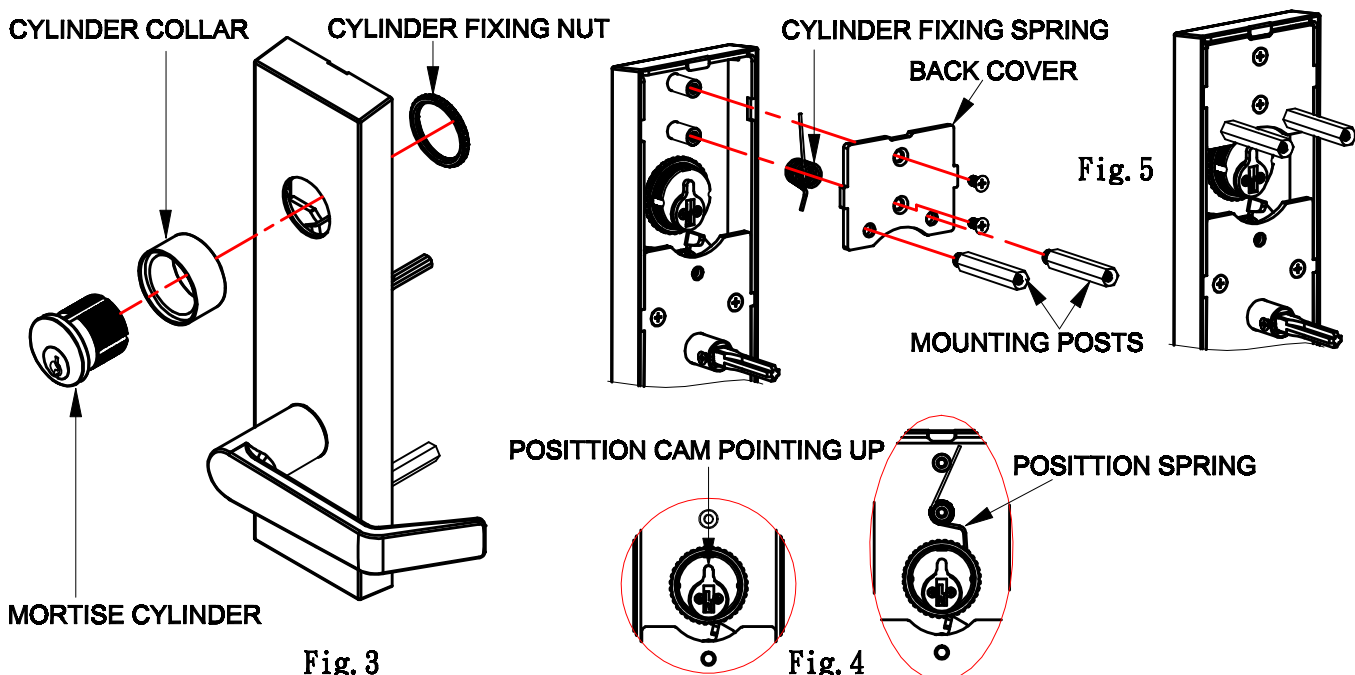


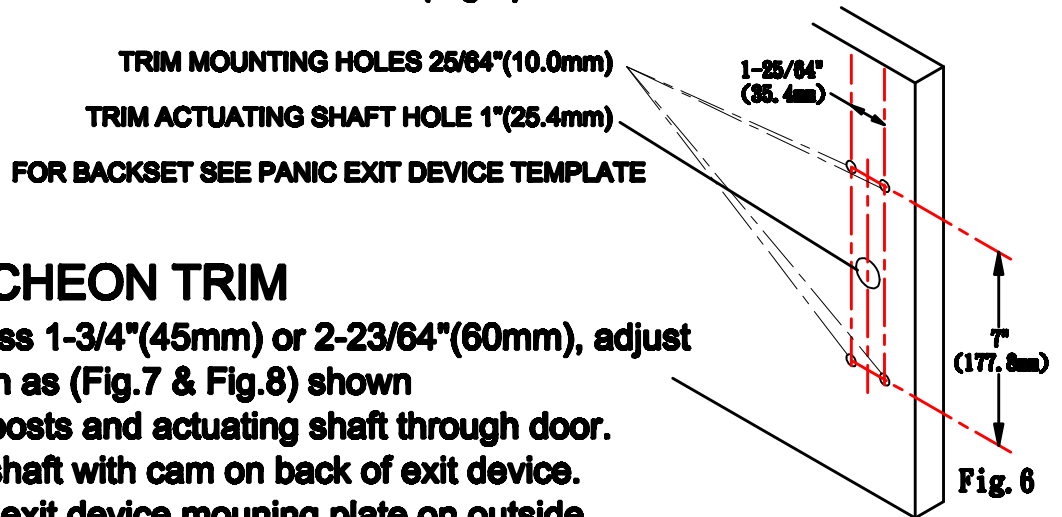
Fig. 3

Fig. 4

Fig. 5

MARK AND MOUNTING HOLES FOR ESCUTCHEON TRIM

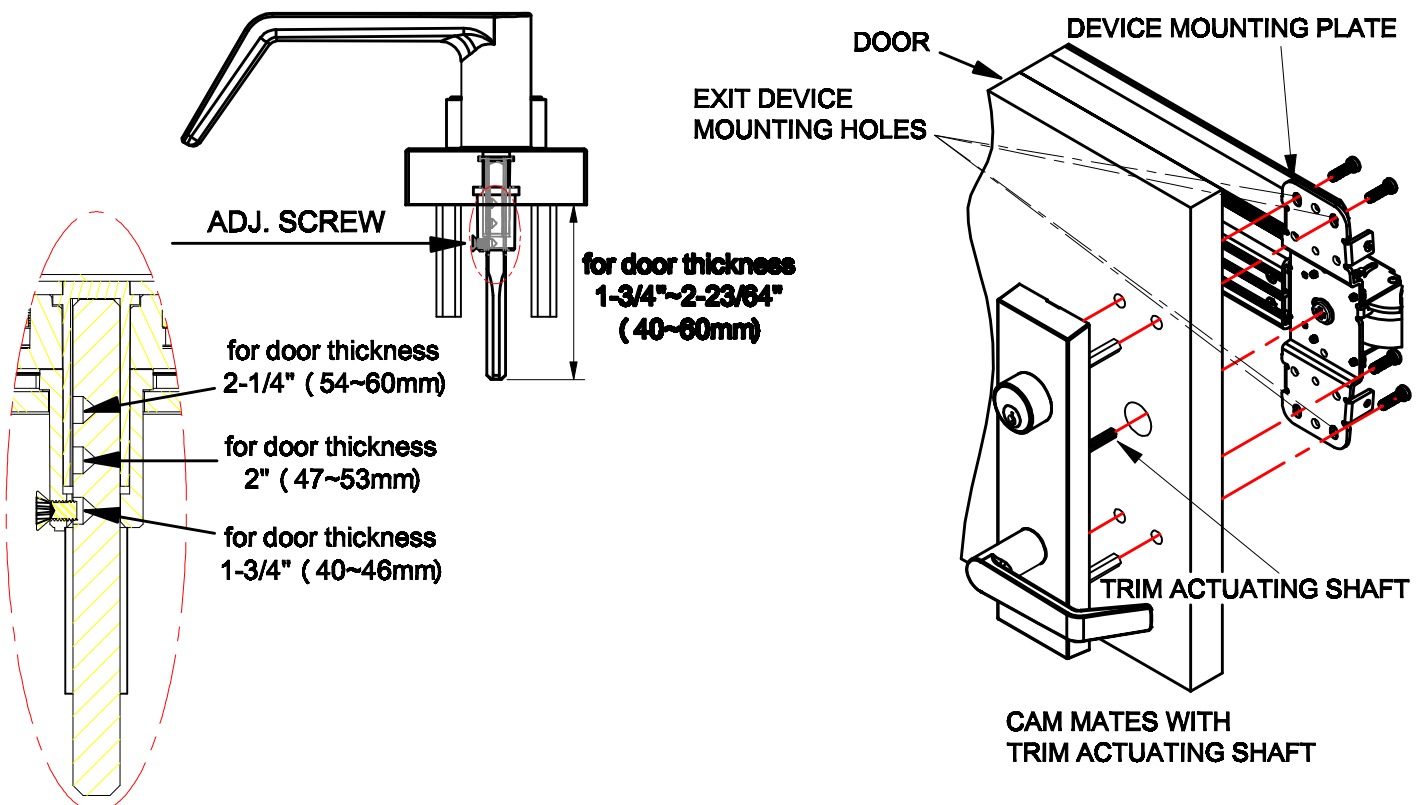
1. Mark horizontal centerline by matching to the exit device centerline, which can be found from the exit device template.
2. Refer to Applications Section on page 1 to determine the location of the vertical centerline. Apply trim TEMPLATE to door refer to vertical centerline, which should match exit device vertical centerline located on push side of door.
3. Mark and drill $25/64"$ ($\phi 10.0\text{mm}$) holes for mounting posts as shown on template.(Fig.6)
4. Mark and drill $1"$ ($\phi 25.4\text{mm}$) hole for the trim actuator shaft, which mate with the exit device. See exit device instructions for details.(Fig.6)



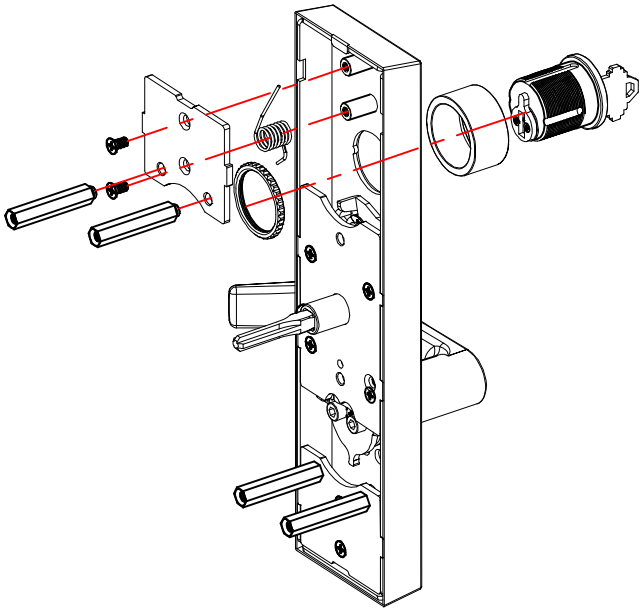
INSTALL ESCUTCHEON TRIM

1. Confirm door thickness $1-3/4"$ (45mm) or $2-23/64"$ (60mm), adjust actuating shaft length as (Fig.7 & Fig.8) shown
2. Insert trim mounting posts and actuating shaft through door.
3. Mate trim actuating shaft with cam on back of exit device.
4. Fasten the trim from exit device mounting plate on outside face of door with provided screws.
5. Test installation by rotating lever handle or key to verify trim activates exit device.

※NOTE: Dummy trim is only for pulling door, handle does not rotate.

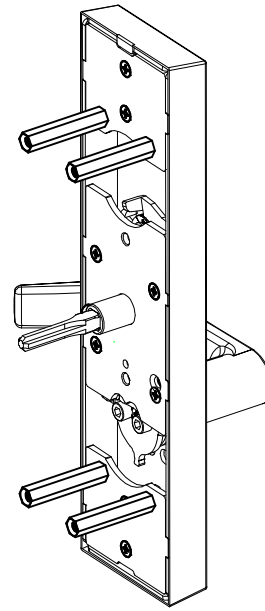


HEAVY DUTY ESCUTCHEON LEVER TRIM - LONG ESCUTCHEON TYPE



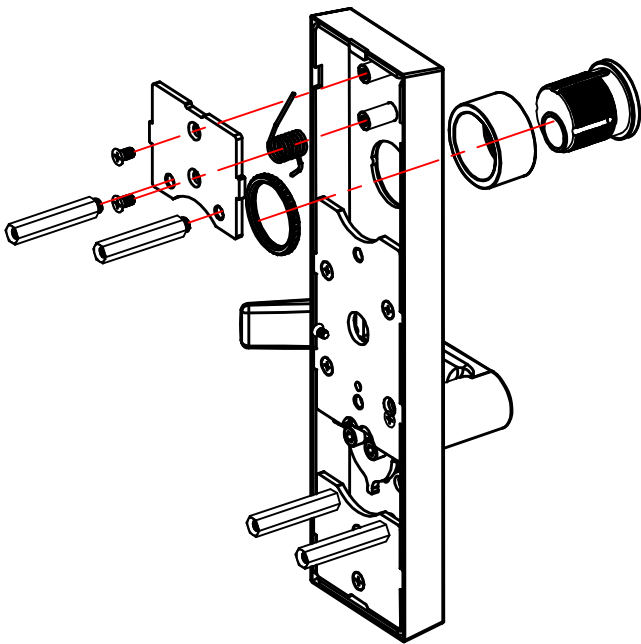
**Key
Locks/Unlocks Lever**

**Entrance
ANSI Function 08**



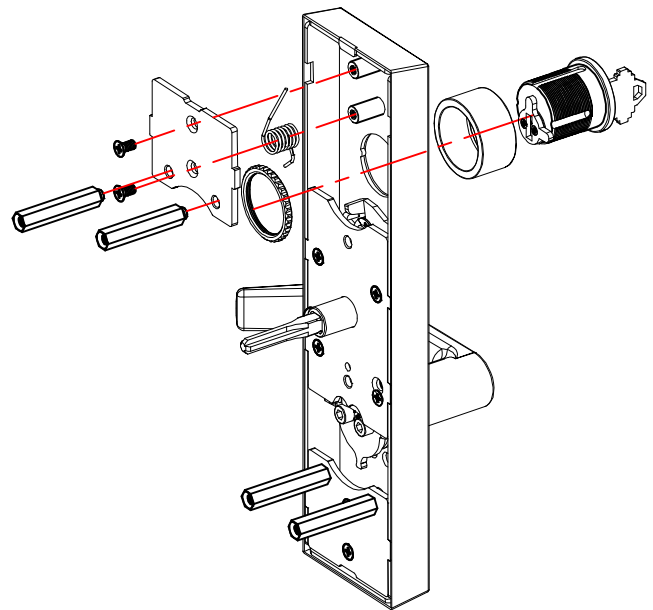
**No Cylinder
Lever Always Active**

**Passage
ANSI Function 14**



Dummy Trim

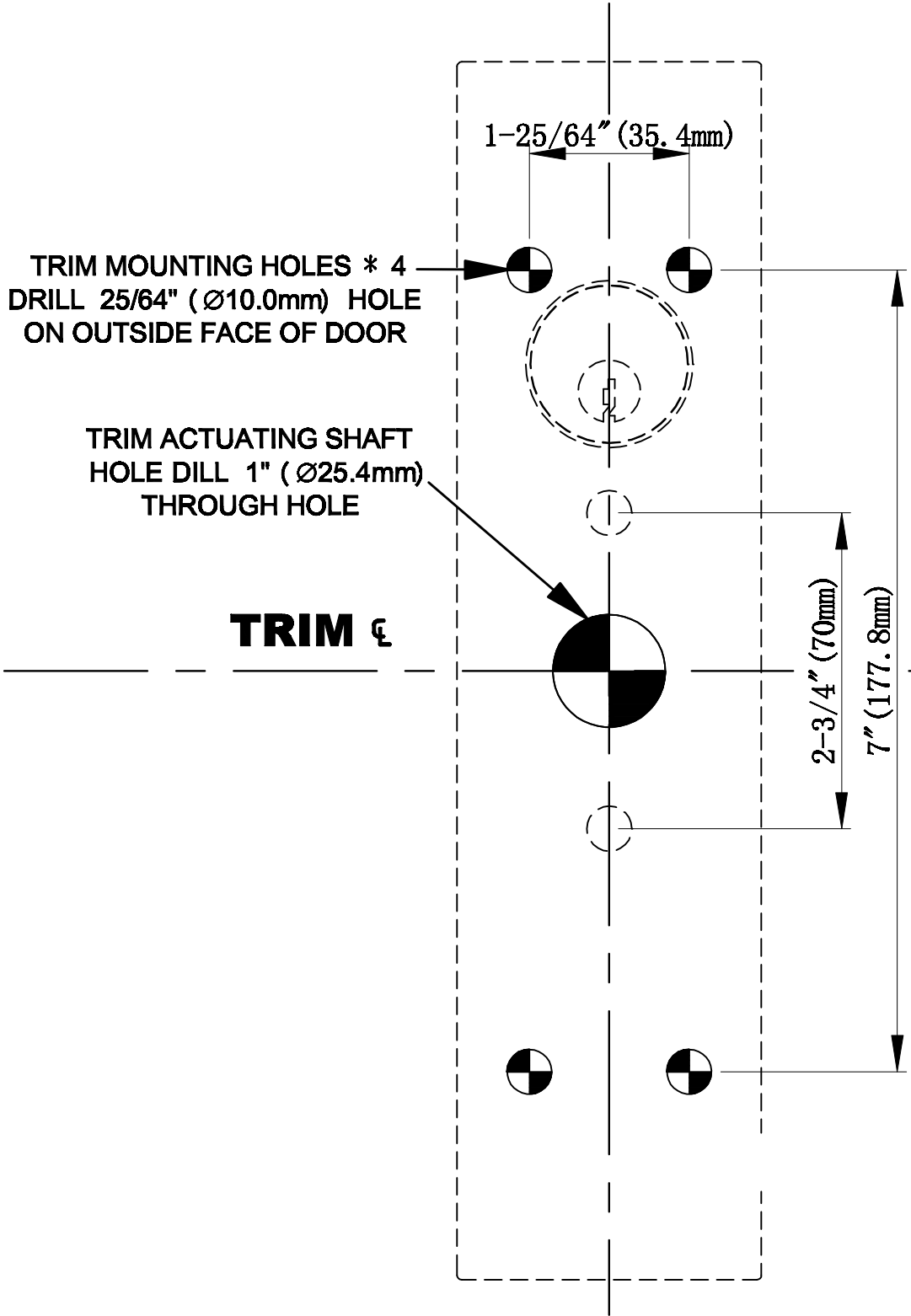
**Dummy
ANSI Function 02**



Key Unlocks Lever

**Storeroom
ANSI Function 03**

TEMPLATE FOR HEAVY DUTY ESC LEVER TRIM (1:1)



TRIM MOUNTING HOLES * 4
DRILL $25/64''$ ($\varnothing 10.0\text{mm}$) HOLE
ON OUTSIDE FACE OF DOOR

TRIM ACTUATING SHAFT
HOLE DILL 1" ($\varnothing 25.4\text{mm}$)
THROUGH HOLE

TRIM €

OUTSIDE FACE OF DOOR