

# 8000 SERIES

**ANSI GRADE 1**

**ANSI GRADE 1**  
**ANSI/BHMA A156.4-2000**  
 Series 2000, PT1  
 Exceeds 1,500,000 cycles with Backcheck



UL10C Positive Pressure  
 Rated. Conforms to UBC  
 7-2 (1997). (Uniform  
 Building Code Standard)



Comply with  
 ANSI A117.1

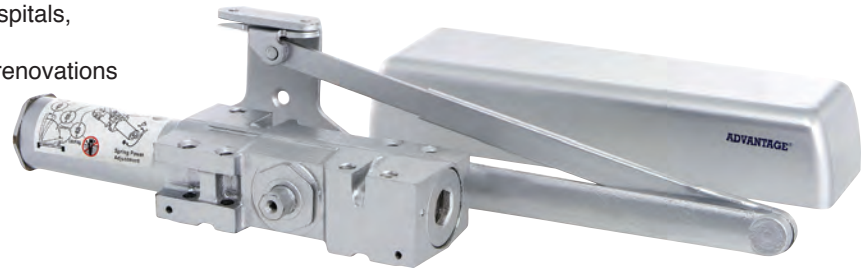
**25-Year Warranty**

**Model**

**8000** Adjustable power size 1-6 with Back Check  
**8000/DA** Adjustable power size 1-6 with Delay Action

**Applications**

- Extra Heavy Duty Commercial model ideal for high traffic door  
 Versatile for new constructions, such as schools, hospitals,  
 and public institutions
- Same mounting hole pattern as LCN4041, ideal for renovations
- Tri-packed for all type applications
- Sex-bolts included for Metal Door mounting



**Features**

- Multi-size spring adjustable power size 1-6  
 Factory preset size 3
- Meet ADA

Product Specification	
Material	Heavy Duty Cast Iron body, forged steel arm Heat treated forged steel piston Double Heat treated Steel pinion
Cover	Full plastic cover – standard
Valves	Triple valve control for Closing speed, Latching speed, and Back-check cushion Delayed Action valve – Optional (Model: 8000DA) Staked valve for power adjustment
Arm & Brackets	Standard arm and parallel bracket included for different mounting demand
Screws	Self-tapping wood screws, machine screws, and sex-bolts
Finishes	Aluminum, Duronotic, Gold, and US26D-Satin Chrome

**Optional Functions**

Wide choice of options for different applications

- Hold Open Arm (8001)
- Parallel Rigid Cush Arm (8002)
- Parallel Rigid Cush and Stop Arm (8003)
- Extended forearm (8004)
- Drop Plate (see Accessories)

\* Special order from the factory

- Metal cover
- Plated Finish: US3, US26

**Technical Dimensions**

Series 8000	Size	
A. Length of Closer Body	11"	
B. Horizontal Mounting Holes	5"	
C. Vertical Mounting Holes	1"	
D. Height of Closer Body	2-3/4"	
E. Projection from Door	2"	



**8001**  
**Hold-open Arm**  
 Stand for pull side & top jamb  
 Use with PA bracket for  
 parallel arm mount



**8002**  
**Parallel Rigid  
 Cush Arm**  
 Auxiliary Stop in  
 soffit shoe



**8003**  
**Parallel Rigid  
 Cush and Stop Arm**  
 Hand control plunger  
 stop in soffit shoe



**8004**  
**Extended Forearm**  
 For Top Jamb with  
 reveal between  
 2-5/8" to 4-13/16"

**PAB01**  
**Parallel Bracket**  
 for Hold Open Arm mounting  
 can also use for regular  
 parallel arm application



**80C**  
**Standard Full Plastic Cover**



**1348**  
**Sex-bolt with screw**



**Accessories**

**80DP-ST**

Size: 12-1/4 x 3-9/16"



**Drop Plate – Pull Side**

Hinge side mount when top rail is less than 3-3/4"  
 Plate require 2" minimum top rail

**80DP-TJ**

Size: 12-1/4 x 3-9/16"



**Drop Plate – Top Jamb**

Use when frame face is less than 3 1/2"  
 Use 8004 forearm if top reveal exceeds 2-9/16"

**80DP-TG**

Size: 12-1/4 x 3-9/16"



**Drop Plate – Top Jamb  
 with flush ceiling**

Top of head frame face in flush ceiling condition  
 Plate requires 1-3/4" minimum frame face  
 Use 8004 forearm if top reveal exceeds 2-9/16"

**80DP-PA**

Size: 12-1/4 x 5"



**Drop Plate – Parallel Arm**

Use when top rail is less than  
 5-1/2", measured from the stop  
 Plate requires at least 2-1/2" top rail

**ADVANTAGE**<sup>®</sup>  
 by PHILADELPHIA HARDWARE GROUP